

# VirtualBox Lab Environment Readme

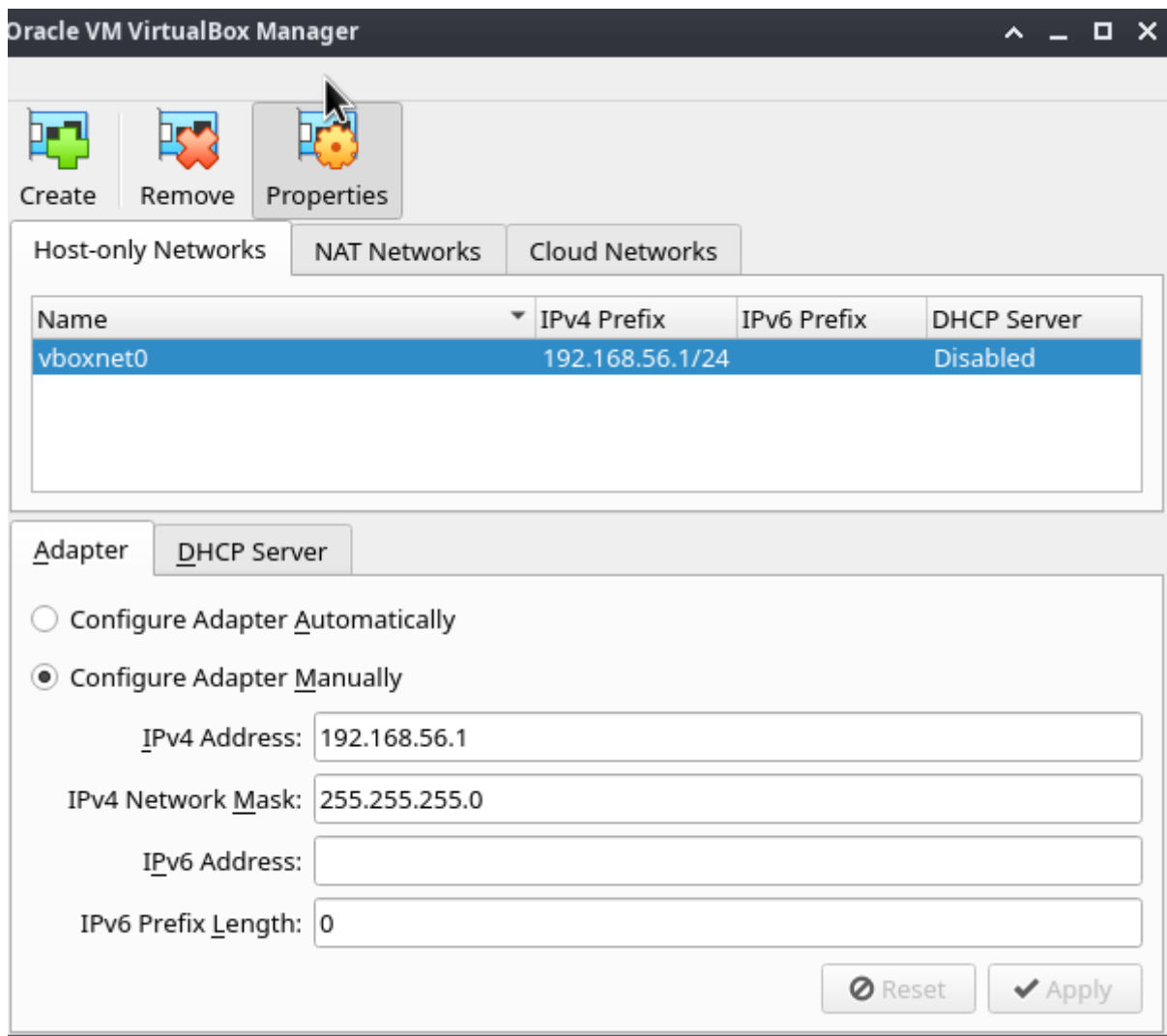
---

## VirtualBox Lab Network

1. create vboxnet0  
install virtualbox then Open VirtualBox  
File->Tools->Network Manager  
Create // name: vboxnet0  
and make sure IP address:

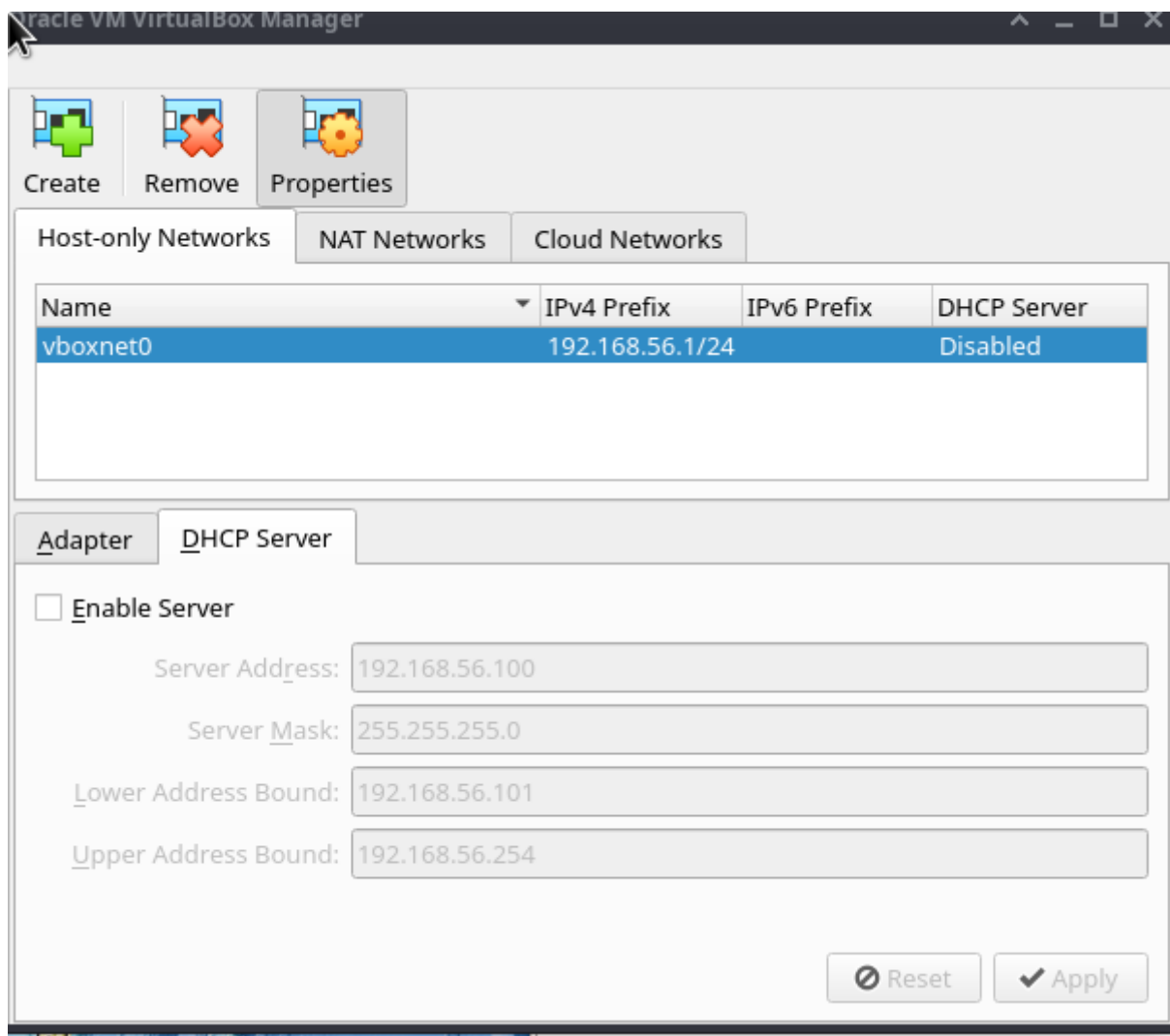
IP: 192.168.56.1

netmask: 255.255.255.0



2. disable DHCP

uncheck Enable DHCP Server and click Apply to disable it



## The DRBL Lab machines

1. DRBL Server
  1. import DRBL.ova
  2. System EFI Enabled
  3. There are 2 network adapters
    1. First is NAT for internet access(192.168.56.254)
    2. Second is host-only, vboxnet0 for DRCL Clients
2. Template machine
  1. import ubuntu.ova
  2. System EFI Enabled
  3. Single network adapter with host-only, vboxnet0
3. clients
  1. import client-\*.ova
  2. System EFI Enabled
  3. Single network adapter with host-only, vboxnet0